

# Qosium Scope

*Qosium Scope is a real-time analyzer for managing Qosium measurements. You can use Scope to activate and control Qosium Probes over a network connection. The essential features of Scope are measurement parameterization, running measurements, results collection, and results visualization. Qosium Scope is an excellent tool for manual QoS and QoE measurements.*

# Table of Contents

1. Overview .....	3
2. User Interface at a Glance .....	4
3. How to Get Started with Scope .....	5

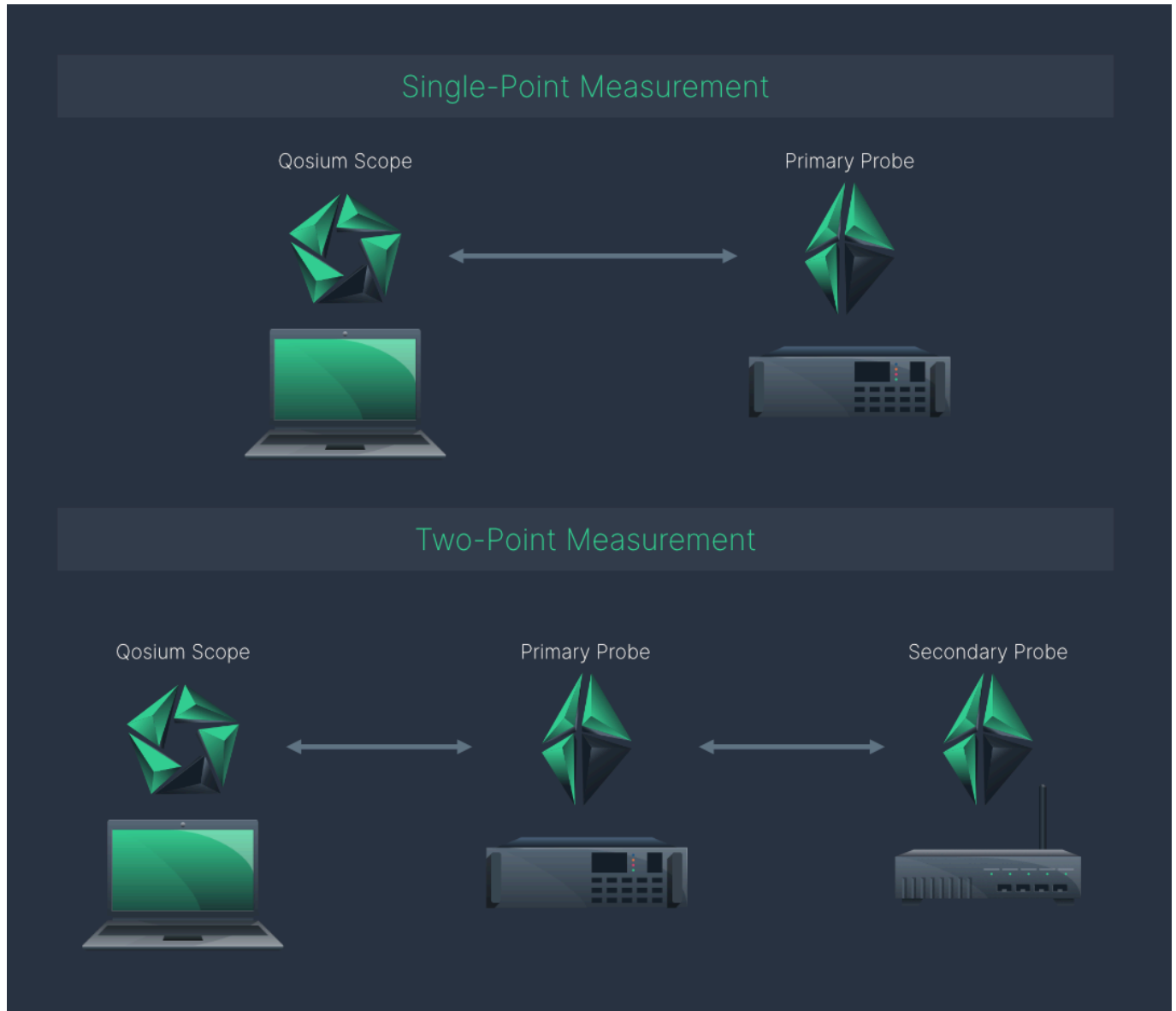


## 1. Overview

Qosium Scope is the primary tool for carrying out manual measurements in the Qosium product family. It is a *controlling entity*, which means that it connects to [Qosium Probes](#) and uses them to do the measurement work. Scope then collects the measurement results and offers various ways to visualize, store, and process these results.

Qosium Scope is like any other desktop application. It doesn't require any external hardware and can be run on a regular PC or laptop. With Scope, all features of Qosium measurements are at your fingertips.

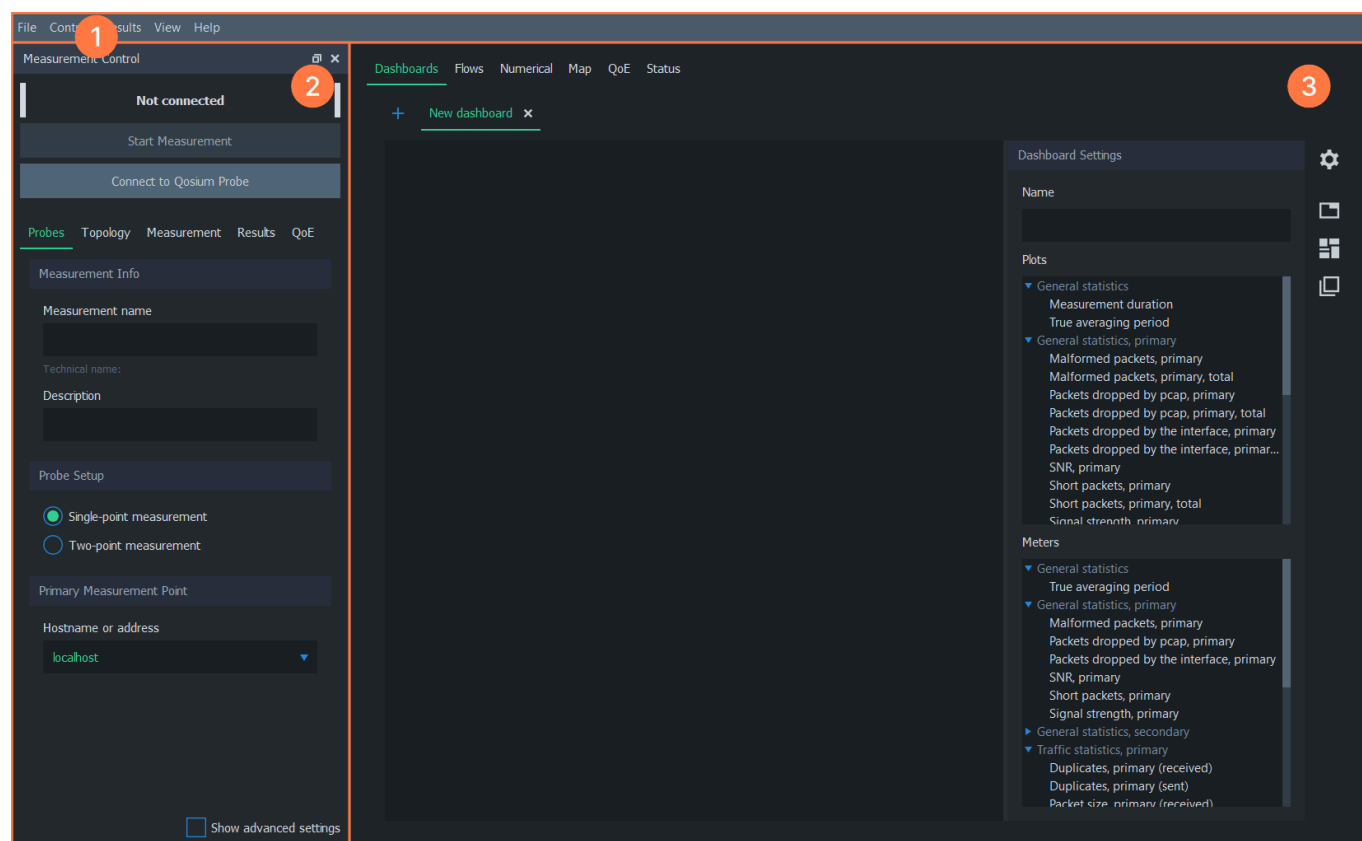
Scope has two distinct measurement modes: **Single-point measurement** and **two-point measurement**. In *single-point measurement*, Scope uses one Probe to measure a single network node or point. In *two-point measurement*, Scope instead uses two Probes to measure a network path.



## 2. User Interface at a Glance

After [installing and launching](#) Scope, the main window opens up. The window consists of the following elements:

1. [Menu Bar](#) - Access basic measurement functions, settings, etc.
2. [Measurement Control](#) - Configure and start/stop measurements
3. [Workspace Area](#) - View and analyze measurement results



### 3. How to Get Started with Scope

See the sub-sections for more information on installation, launching, and on each UI element. To learn how to use Scope to carry out measurements, see [Get Started with Qosium](#).